



## AdaptMAC

Monitor. Authorise. Control.

### Product Overview

Adapt**MAC** hardware provides unprecedented on-site digital management control over delivery, storage, transfer and dispensing of fuels, oils and other bulk commodities.

Adapt**MAC** is engineered to withstand the harsh conditions encountered on sites and is the central hub that allows for fluid monitoring, transfer and dispensing. Featuring a touchscreen and solid-state construction, Adapt**MAC** is the in-field access point for authorising users and equipment, reviewing tank levels, recording transaction data and tracking emissions.

The Adapt**MAC** automatically captures all product movement as distinct transactions, with dates, times and other details right down to the individual vehicle, person, or asset. Its accuracy is unprecedented in the mining and rail sectors.

Adapt**MAC** is integral to **VERIDAPT**'s industry-leading IoT fuel and energy management platform, Adapt**FMS**. Its touchscreen is easy to install and is designed to accurately monitor fuel consumption and track emissions across any size mine site in any weather conditions. It is proven in temperatures of between -40c and +70c.

Currently our rugged hardware integrates with hydrocarbon infrastructure to monitor and control the flow of 30 billion litres of fuel and oil across 150+ mining and rail operations, worldwide

### Value Proposition

The Adapt**MAC** unique interface allows sites to customise workflows and integrate with PLCs. It also enables operators to capture information, such as reporting of faults or recording odometer readings and engine hours reported via the Adapt**IQ** software- a secure, central web application.

Our rugged hardware supports our solution's data integrity and our overall value as a fuel and renewable energy management platform designed to be instantly deployable as a reliable, interconnected system with an excellent Lifetime Cost of Ownership and Time to Value offering.

## Key Features

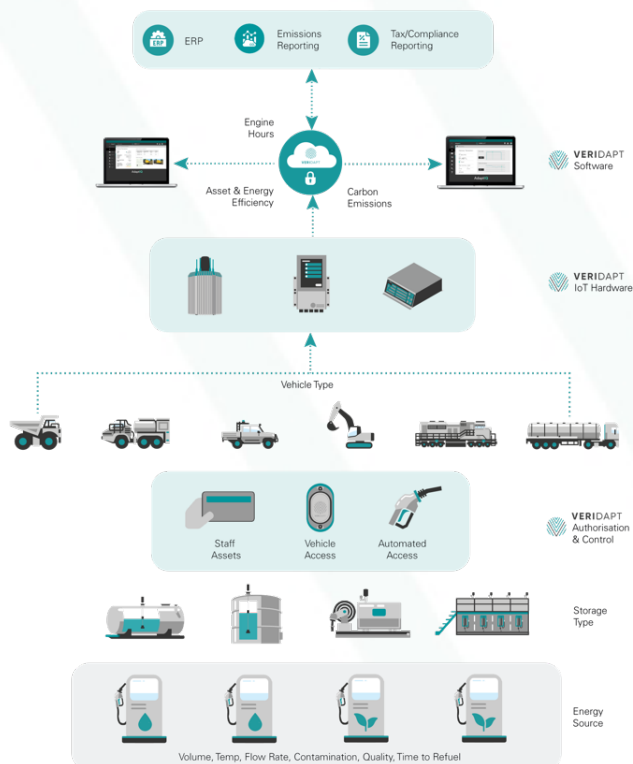
- Rugged touchscreen controller for Managing and Controlling (MAC) the delivery and dispensing of fuel and oil
- Access point for authorisation of users and equipment
- Display of tank and asset levels
- Metering of deliveries, transfers, and dispenses
- Modular construction with no moving parts for cooling or storage media
- Modern design and facilitates spring terminals for easiness of use and installation
- Extended operating temperature -40°C and +70°C
- Engine hours tracking and correlation against lubricant and coolant use
- SSD storage for faster boot-up
- System recovery via in-built recovery partition (AdaptMAC V2.1 and higher)
- Display super high brightness LED backlight
- Touch panel toughened 6mm glass with anti-glare coating
- Zero drift with no calibration required
- Works with gloves
- Shock and vibration resistant

## Key Benefits

- Designed to operate in the harshest conditions
- Operator identification
- Ability to digitise and report faults transaction event in real time
- ERP integration by API
- Tank level display for route planning

## Other Unique Benefits

- Reconciliation via automated transactions ensuring data integrity
- Minimum and maximum-ops levels established and monitored with alerts and alarms leading to inventory optimisation
- Real-time data visibility predicting warranted changes in production to manage and prevent stockout
- Vendor-managed inventory that allows vendors to track usage in real-time
- Multiple fuel authorisation options – tracking of product, field user ID, equipment item, flow rates, time, duration, burn rates, queuing and internal tank-to-tank product movement



For more information on our market leading technology, please contact our sales team

[info@veridapt.com](mailto:info@veridapt.com)